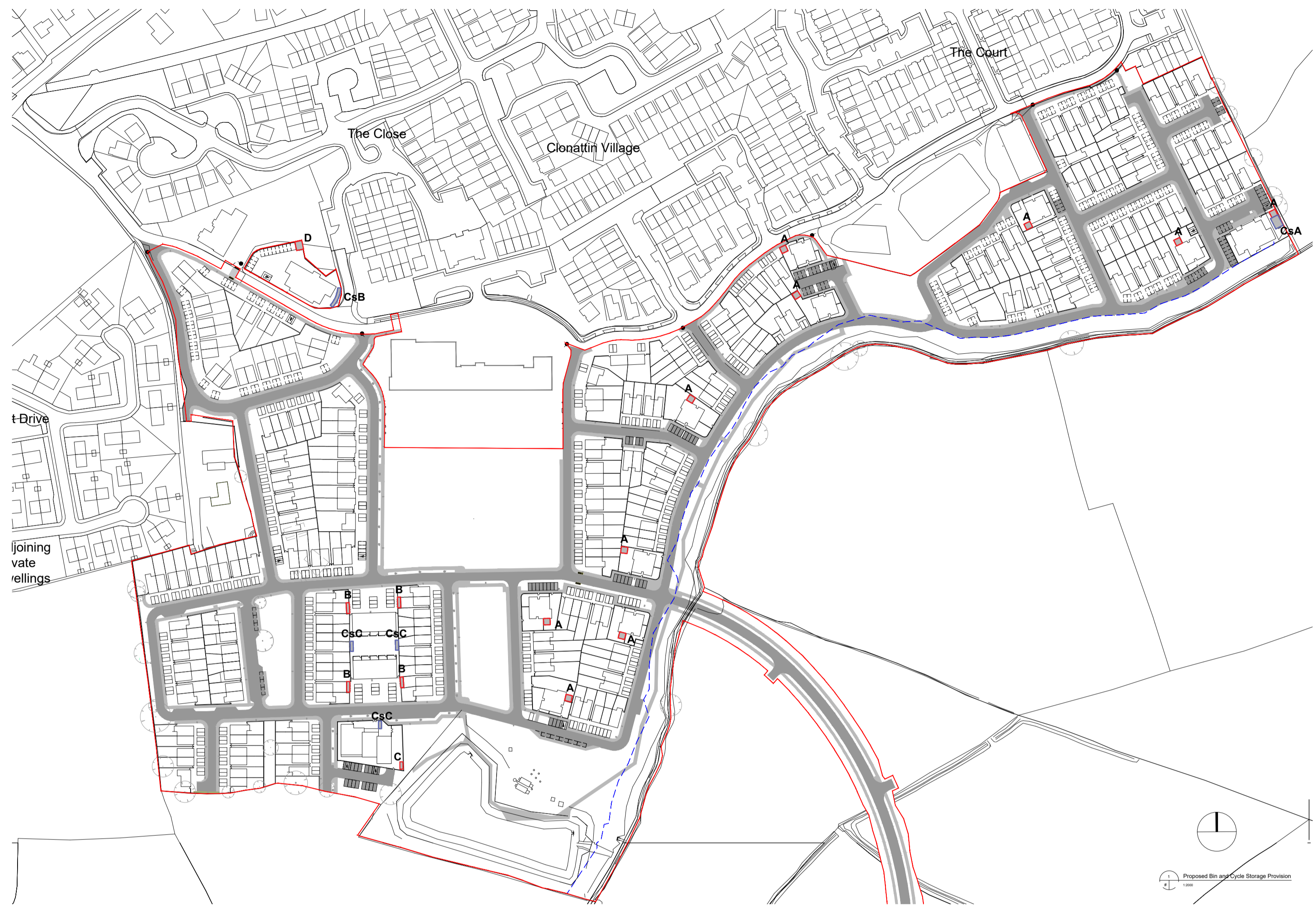


Notes:  
 Do not scale from this drawing. Use figured dimensions in all cases. Vary dimensions on site and report any discrepancies to the architect immediately. This drawing is the property of REDDY ARCHITECTURE + URBANISM. It is to be used in conjunction with the Architect's Specification, Fire Certificate, etc. Other drawings shall be issued as and when required. Contract is responsible for:  
 1. All dimensions, quantities and performance requirements to be confirmed on the technical specifications.  
 2. All information that pertains solely to the fabrication processes or to the techniques of construction.  
 3. All coordination of the work of all trades.  
 4. All drawings are to be prepared in accordance with the contract documents.  
 © This drawing is copyright and may only be reproduced with the architect's permission.

Drawing Notes:  
 1. All dimensions are in millimeters unless otherwise stated.  
 2. All dimensions are to face unless otherwise stated.  
 3. All dimensions are to be confirmed on the technical specifications.



- Legend:**
- **A Refuse and Recycling Storage A** (Apartment Block 1x9 Apartment Block 2x1 tot.)
  - **B Refuse and Recycling Storage B** (Maisonette/Duplexes x 4 tot.)
  - **C Refuse and Recycling Storage C** (Creche Area x 6 tot.)
  - **D Refuse and Recycling Storage D** (Apartment Block 3 x1 tot.)
  - **Cs A Cycle Storage** (Apartment Block 2 x1 tot.)
  - **Cs B Cycle Storage** (Apartment Block 3 x1 tot.)
  - **Cs C Cycle Storage** (Duplexes x2 tot./Creche Building x1 tot.)

**REFUSE AND RECYCLING STORAGE CALCULATION:**

**APARTMENT BLOCK 1:**  
 6 Units each No. 2 Residual Waste Bin (1100L) + 1 Recycling Bin (1100 L);

**APARTMENT BLOCK 2:**  
 12 Units each No. 3 Residual Waste Bin (1100L) + 1 Recycling Bin (1100 L);

**APARTMENT BLOCK 3:**  
 15 Units each No. 4 Residual Waste Bin (1100L) + 2 Recycling Bin (1100 L);

**MAISONNETTES/DUPLEXES:**  
 5 Units each No. 2 Residual Waste Bin (1100L) + 1 Recycling Bin (1100 L);

**CRECHE:**  
 No. 3 Residual Waste Bin (360 L) + 3 Recycling Bin (360 L);

**CYCLING STORAGE CALCULATION:**

**APARTMENT BLOCK 1 (enclose):**  
 3 Units x 1B 2P = 3 cycle spaces;  
 3 Units x 2B 4P = 6 cycle spaces;  
 Proposed 9, Required 9.

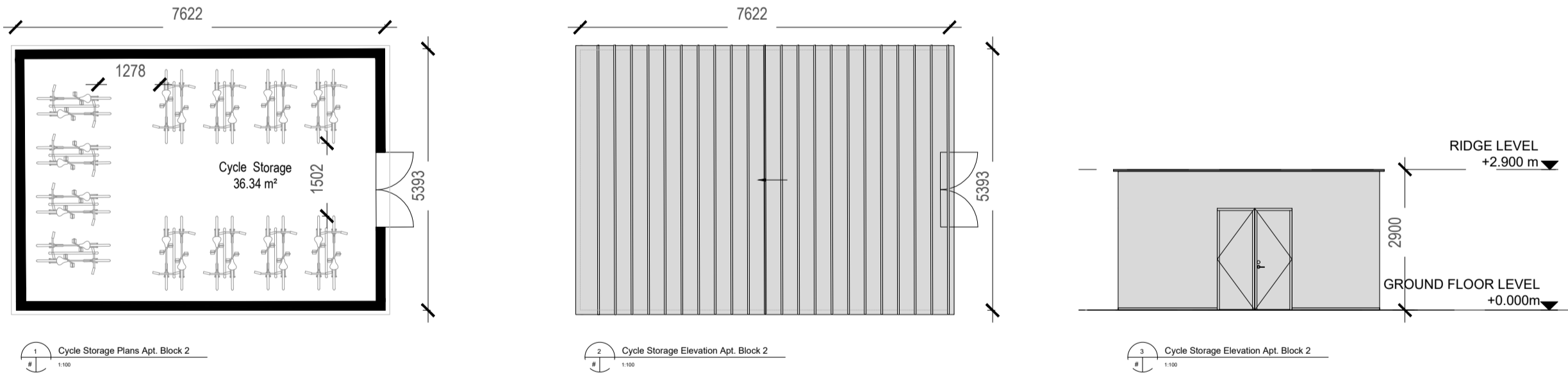
**APARTMENT BLOCK 2:**  
 1 Units x 1B 2P = 1 cycle spaces;  
 6 Units x 2B 3P = 12 cycle spaces;  
 5 Units x 2B 4P = 10 cycle spaces;  
 Proposed 23, Required 23.

**APARTMENT BLOCK 3:**  
 4 Units x 1B 2P = 4 cycle spaces;  
 11 Units x 2B 4P = 22 cycle spaces;  
 Proposed 26, Required 26.

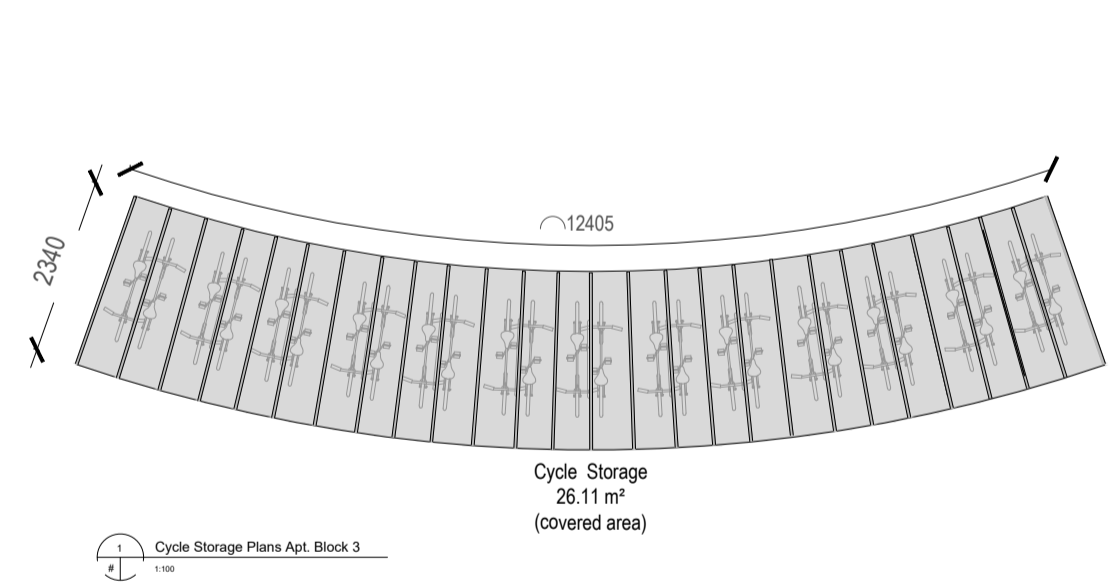
**DUPLEXES:**  
 10 cycle spaces (each storage)

**CRECHE:**  
 10 cycle spaces;

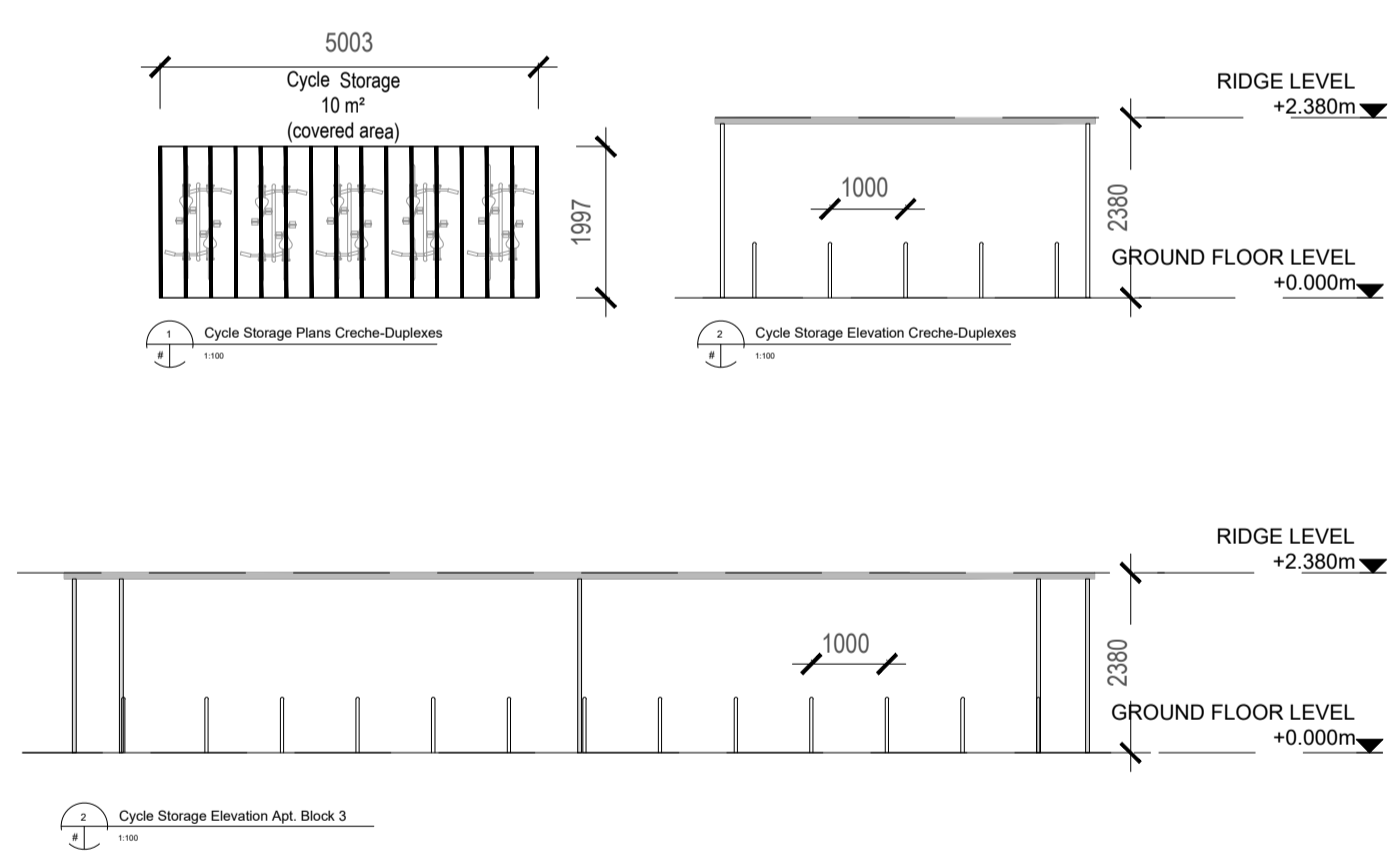
**Cycle Storage A**



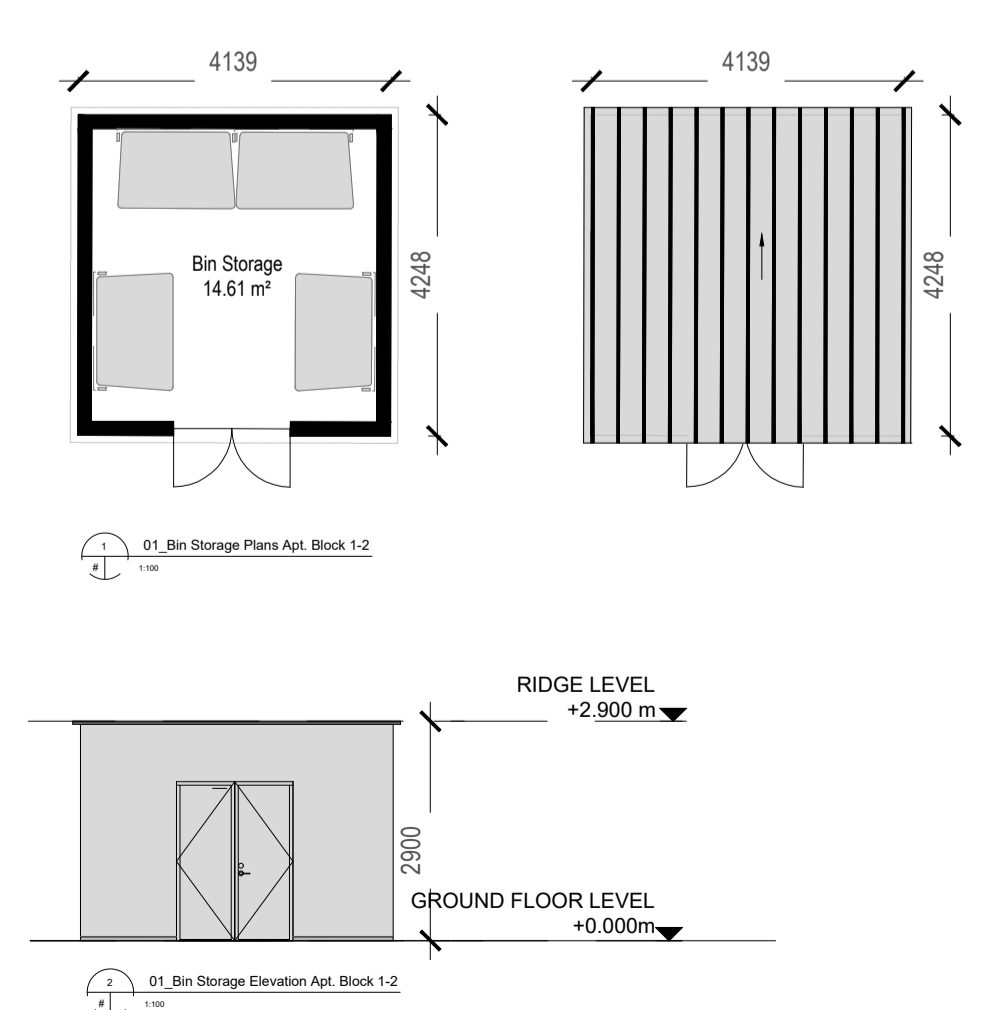
**Cycle Storage B**



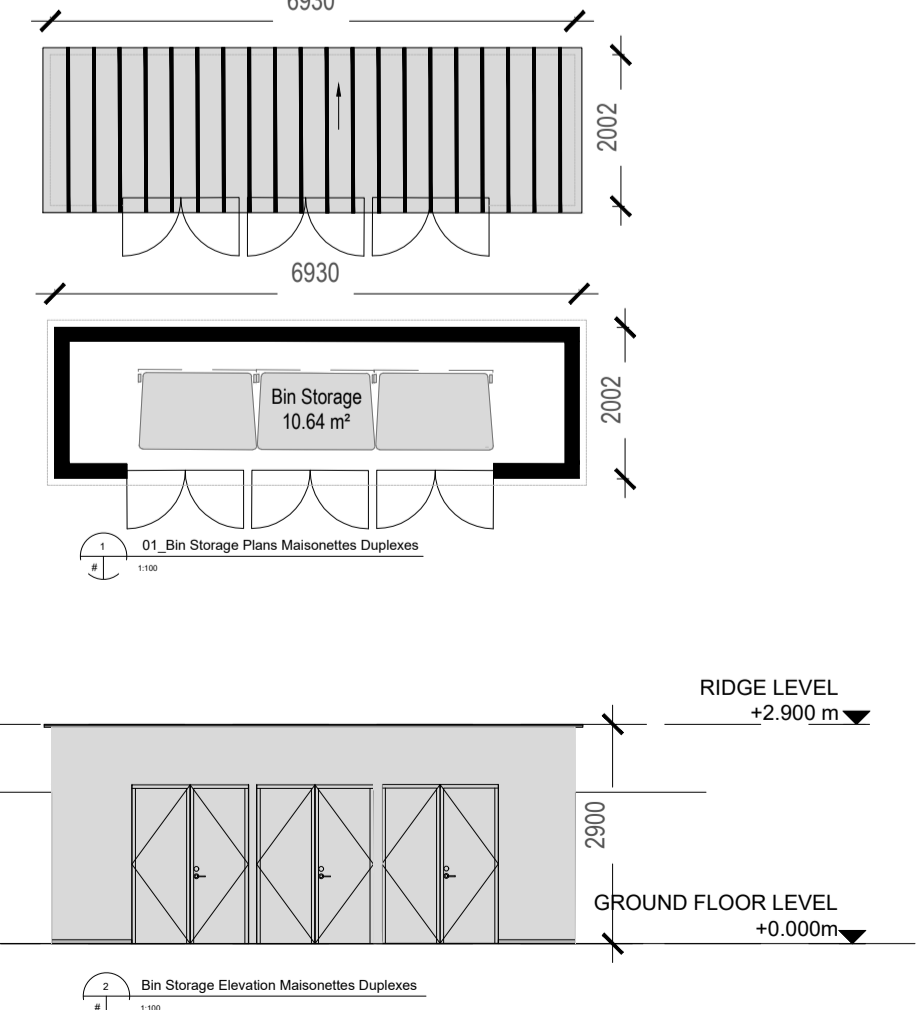
**Cycle Storage C**



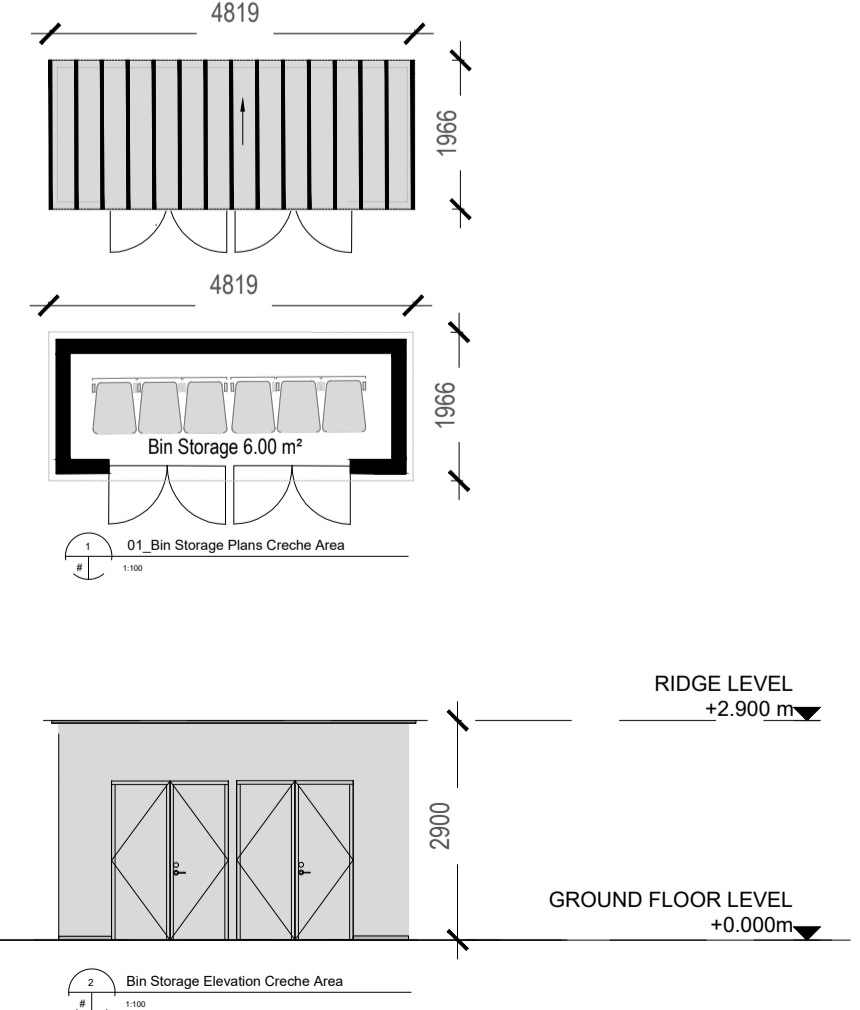
**Refuse and Recycling Store A**



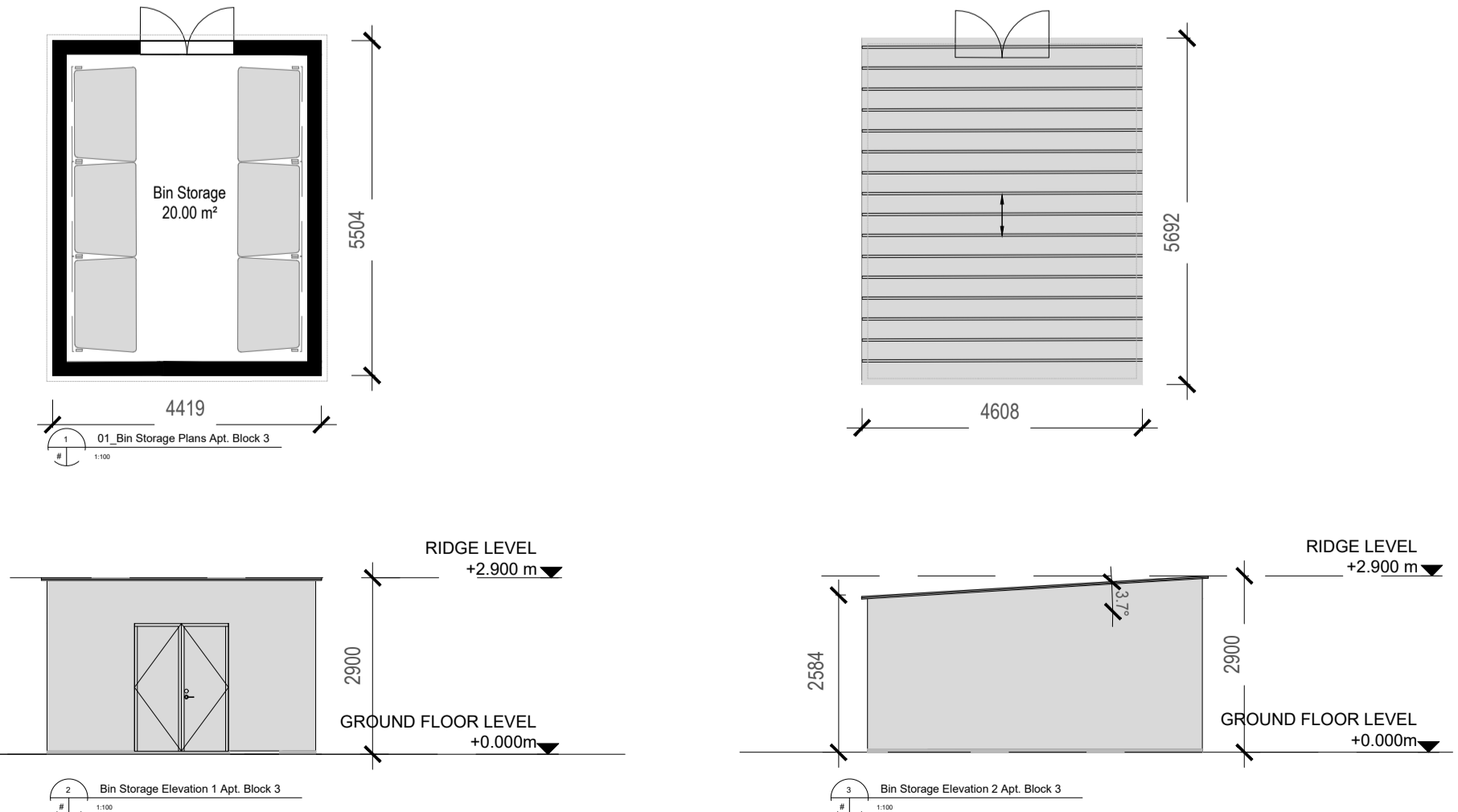
**Refuse and Recycling Store B**



**Refuse and Recycling Store C**



**Refuse and Recycling Store D**



REV	DATE	BY	DESCRIPTION
P04	27/01/21	LB	Issued for Planning
P03.01	20/06/11	LB	Issued for Planning
P03	20/07/08	LB	Revised, OR 21/01/20
P02	19/12/19	LB	Issued for Information
P01	19/12/04	LB	Issued for Information

**reddy architecture + urbanism**

Reddy Architecture + Urbanism  
 41 Dean Street,  
 Kildenny,  
 R55 P291

T: +353 (0)56 7762697  
 W: www.reddyarchitecture.com  
 E: info@reddyarchitecture.com

Client Details:  
 AXIS Construction

Project Details:  
 Proposed Residential Development at Clonattin, Gorey

Drawing Title:  
 Waste Bins / Cycles Storage Apartments Provision Plans Elevations

Job No:	Date:	Scale:
P19-147K	06/10/2020	A1: 1:2000 - 1:100
Status:	Drawn By:	Checked By:
03: Design Development	LB	Mk
Purpose:	3:10 Planning	
Drawing Number:	P19-147K-RAU-XXX-DR-A-31121	Revision:
		P04